

HALL EFFECT ROTARY SENSOR AR 009-09

Hall Effect rotary sensor for motorsport application, no noise effect and high temperature stability.

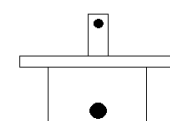
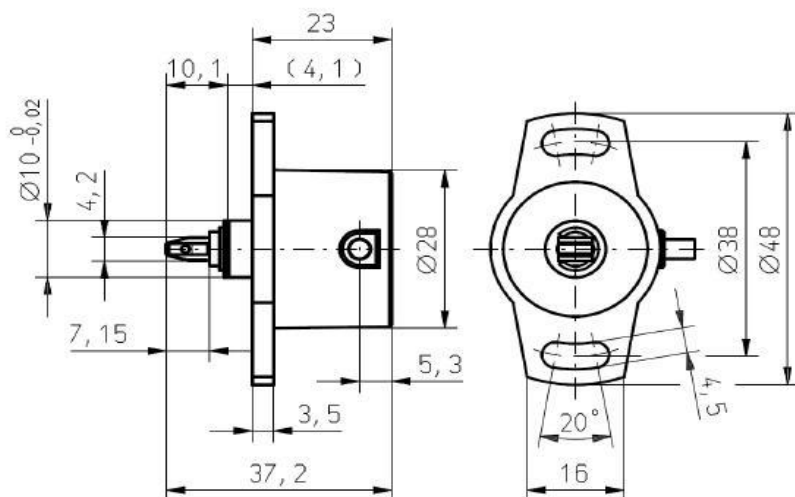
The aluminum body improves mechanical and thermal resistance.

Typical applications: angular position measurement of mechanical devices like throttle, pedal.



TECHNICAL SPECIFICATIONS:

◆ Voltage supply:	5 Vdc
◆ Current consumption:	20 mA
◆ Measure range:	0÷100°
◆ Direction:	Clockwise (front shaft view)
◆ Output voltage:	0,5÷4,5 Vdc
◆ Mechanical angle:	360° continuous
◆ Linearity:	0,5 %FS
◆ Repeatability:	0,03 %FS
◆ Frequency range:	>250Hz
◆ Temperature range:	-40°C ÷ +125°C
◆ Protection:	IP65
◆ Shaft:	Stainless steel 303, Push-On
◆ Weight:	≈ 40 g
◆ Cable:	250 mm
◆ Connections:	Red Supply Black Gnd White Signal Connector on demand



Medial Position